

# Gran's Stitch Niche

[www.gransstitchniche.com](http://www.gransstitchniche.com)

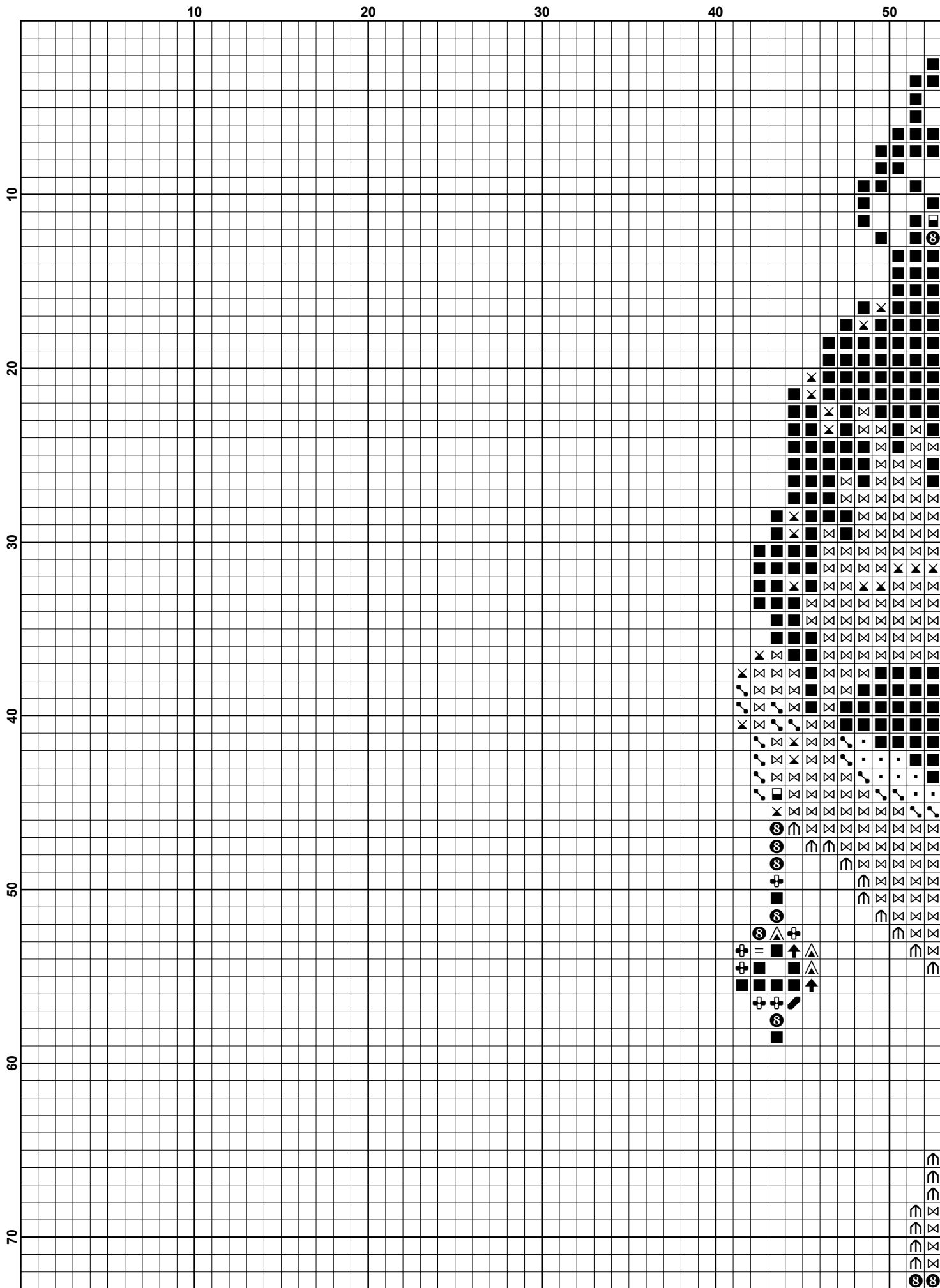
## Cranberry Cuties

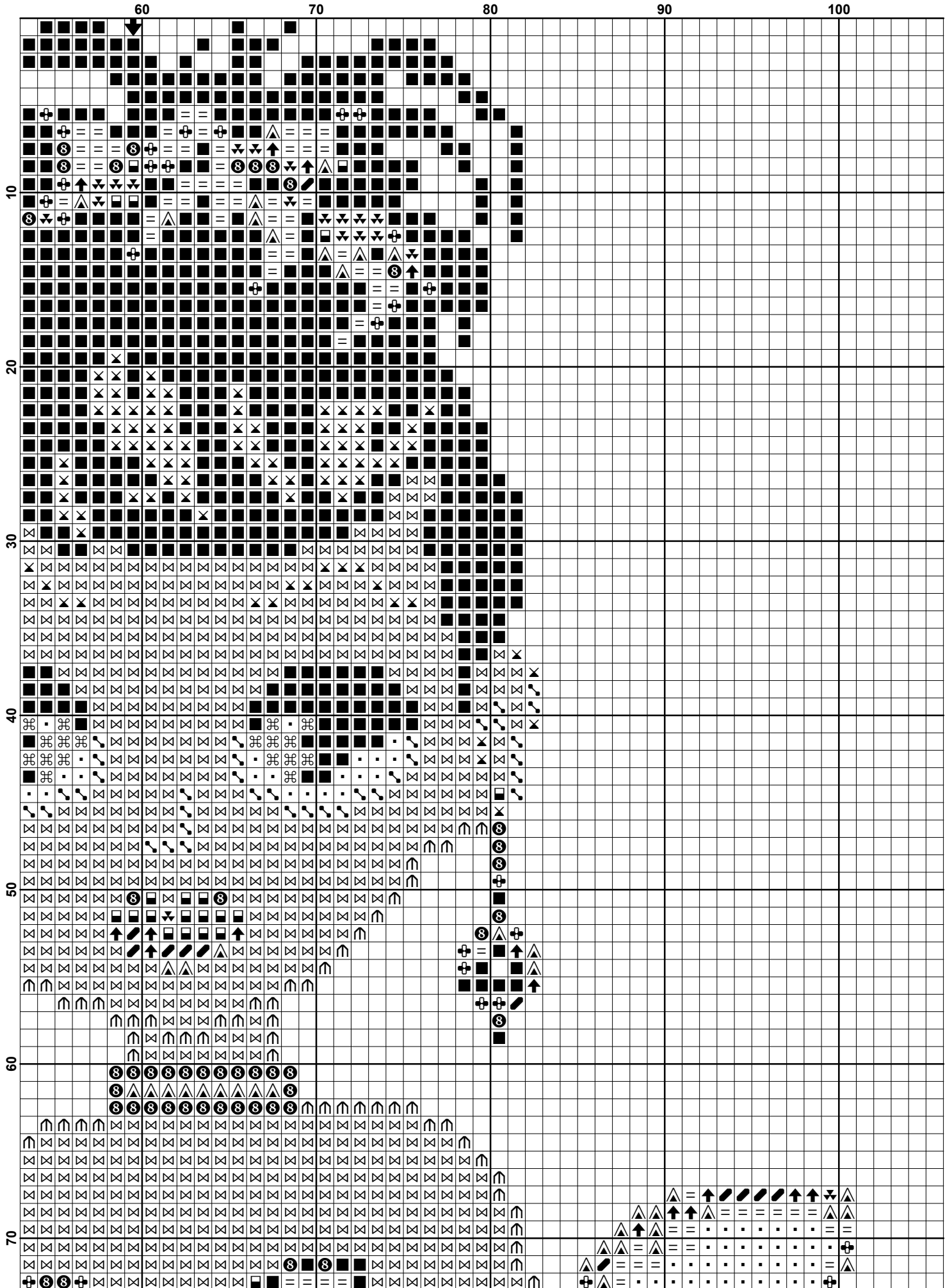


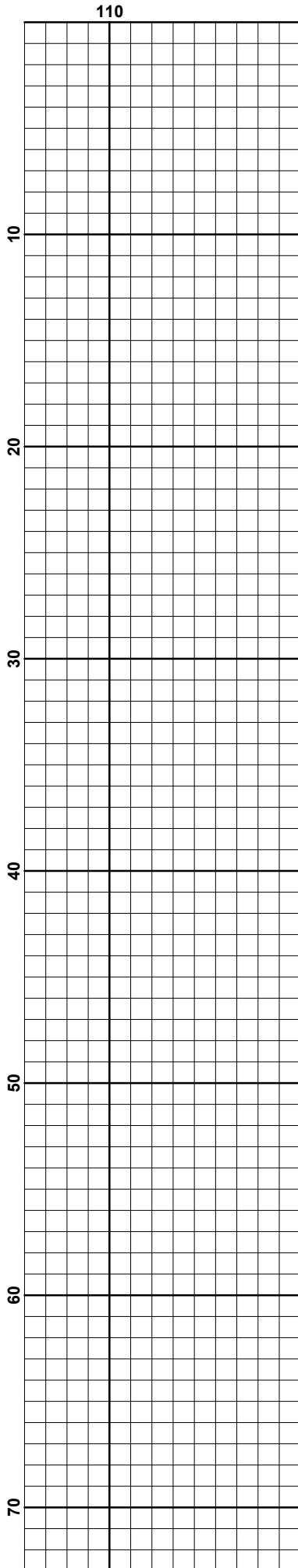
Gran's Stitch Niche ©

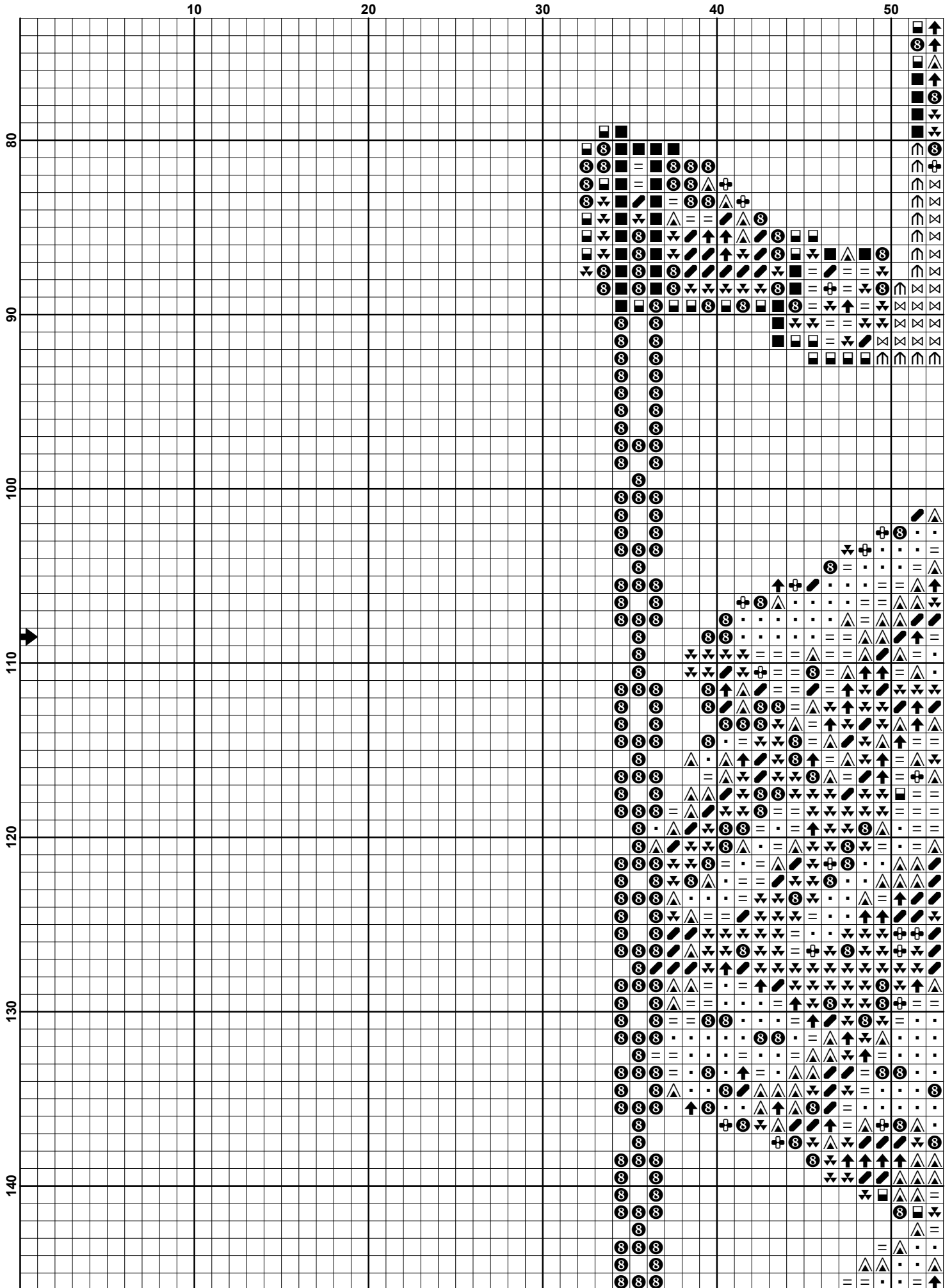
This cross stitch pattern may be shared with your friends. Please feel free to pass this pattern on to others you think might like it.

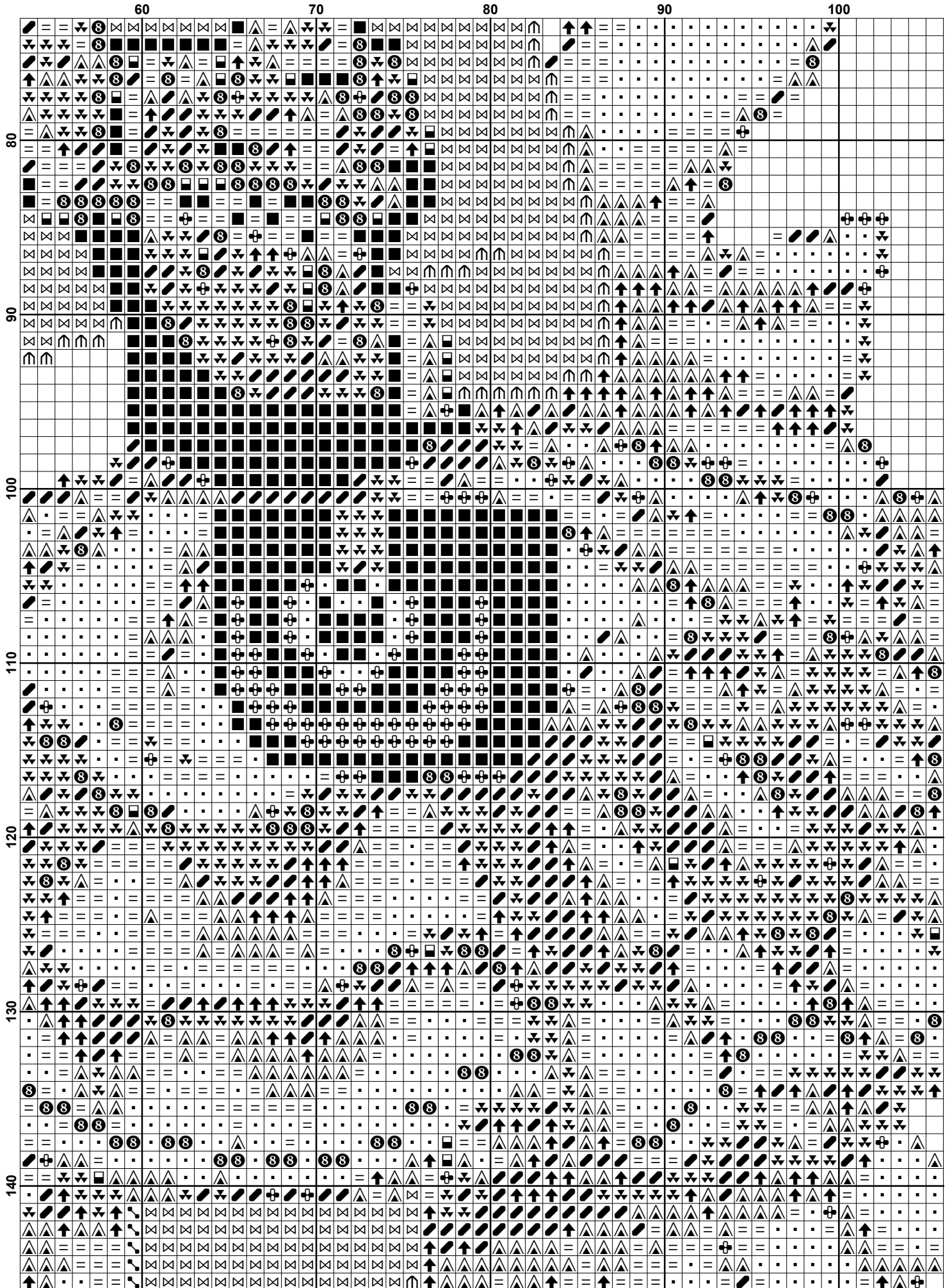
[www.gransstitchniche.com](http://www.gransstitchniche.com)

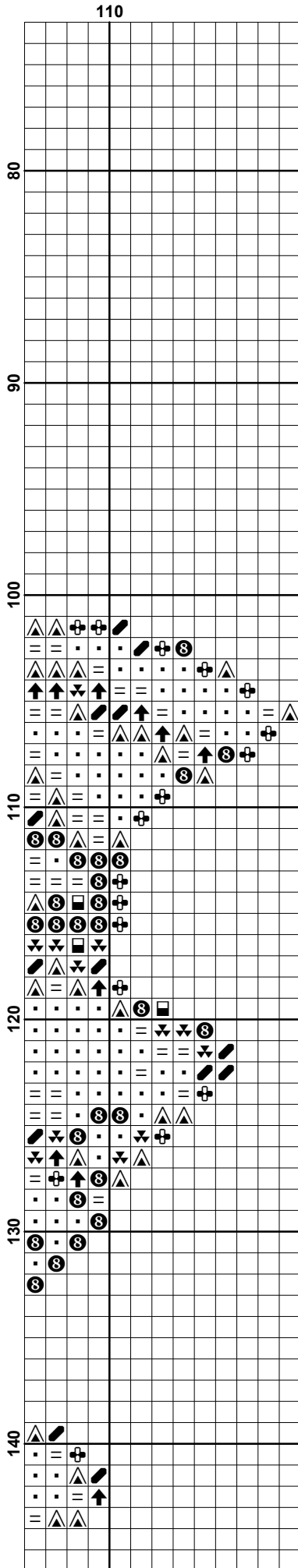


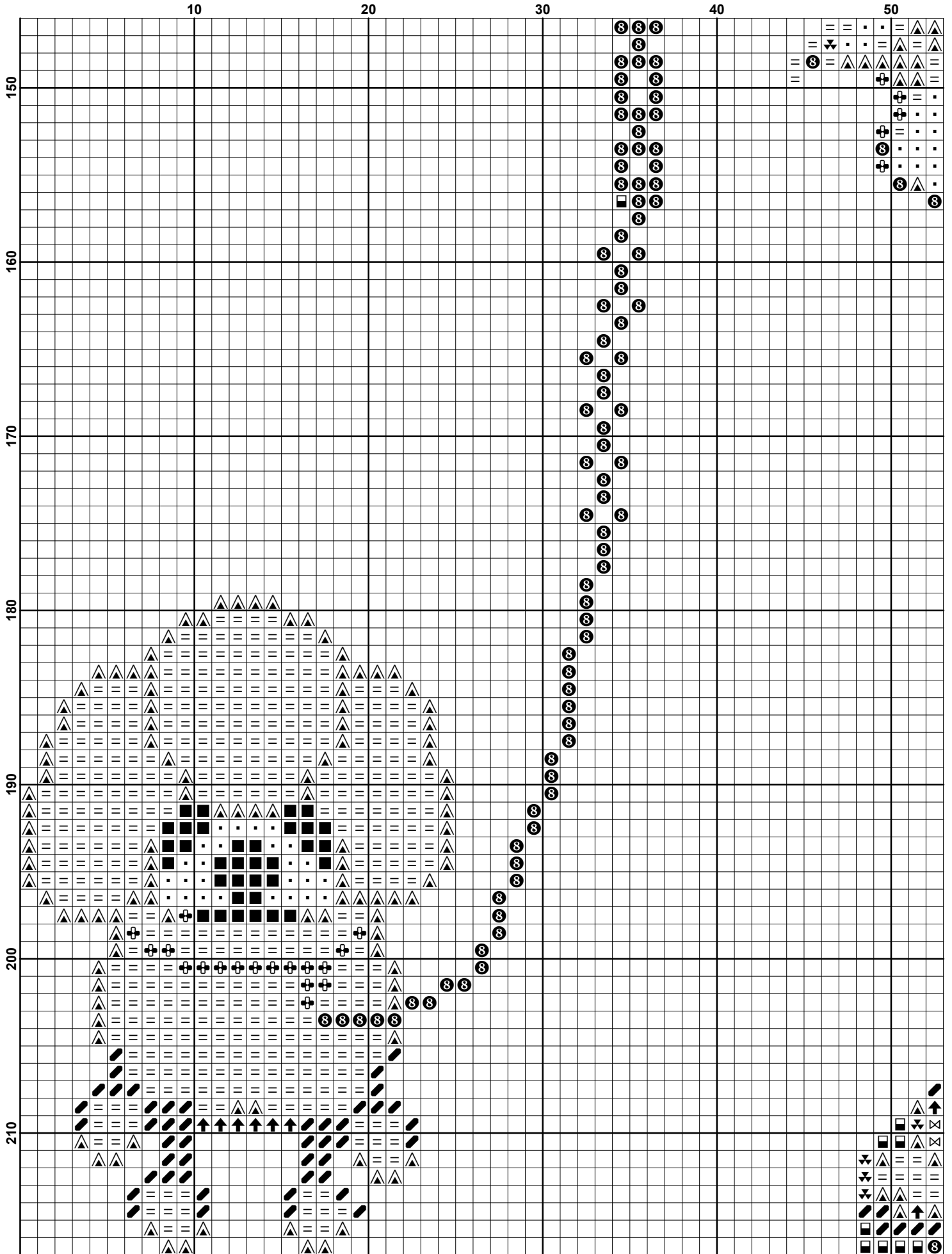






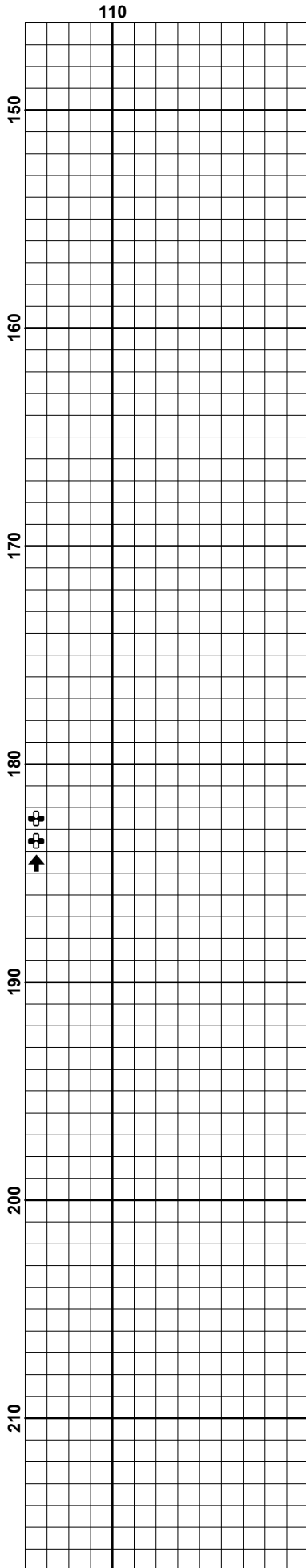




















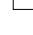






**Pattern Name:** Cranberry Cuties  
**Designed By:** Gran's Stitch Niche  
**Company:** www.gransstitchniche.com  
**Copyright:** Gran's Stitch Niche  
**Fabric:** Aida 14, White  
 119w X 217h Stitches  
**Size(s):** 14 Count, 8-1/2w X 15-1/2h in  
 16 Count, 7-3/8w X 13-1/2h in  
 18 Count, 6-1/2w X 12h in  
 22 Count, 5-3/8w X 9-3/4h in

**Floss Used for Full Stitches:**

Symbol	Strands	Type	Number	Color
	2	DMC	310	Black
	2	DMC	436	Tan
	2	DMC	600	Cranberry-VY DK
	2	DMC	601	Cranberry-DK
	2	DMC	602	Cranberry-MD
	2	DMC	603	Cranberry
	2	DMC	666	Christmas Red-BRT
	2	DMC	898	Coffee Brown-VY DK
	2	DMC	917	Plum-MD
	2	DMC	951	Tawny-LT
	2	DMC	956	Geranium
	2	DMC	3609	Plum-UL LT
	2	DMC	3838	Lavender Blue-DK
	2	DMC	3863	Mocha Beige-MD
	2	DMC	White	White

**Usage Summary**

**Strands Per Skein:** 6  
**Skein Length:** 313.0 in

Type	Number	Full	Half	Quarter	Petite	Back(in)	Str(in)	Spec(in)	French	Bead	Skein Est.
■ DMC 310	310	1249	0	0	0	0.0	0.0	0.0	0	0	1.000
■ DMC 436	436	318	0	0	0	0.0	0.0	0.0	0	0	1.000
■ DMC 600	600	577	0	0	0	0.0	0.0	0.0	0	0	1.000
■ DMC 601	601	718	0	0	0	0.0	0.0	0.0	0	0	1.000
■ DMC 602	602	540	0	0	0	0.0	0.0	0.0	0	0	1.000
■ DMC 603	603	873	0	0	0	0.0	0.0	0.0	0	0	1.000
■ DMC 666	666	105	0	0	0	0.0	0.0	0.0	0	0	1.000
■ DMC 898	898	111	0	0	0	0.0	0.0	0.0	0	0	1.000
■ DMC 917	917	250	0	0	0	0.0	0.0	0.0	0	0	1.000
■ DMC 951	951	1973	0	0	0	0.0	0.0	0.0	0	0	1.000
■ DMC 956	956	337	0	0	0	0.0	0.0	0.0	0	0	1.000
■ DMC 3609	3609	1459	0	0	0	0.0	0.0	0.0	0	0	1.000
■ DMC 3838	3838	18	0	0	0	0.0	0.0	0.0	0	0	1.000
■ DMC 3863	3863	63	0	0	0	0.0	0.0	0.0	0	0	1.000
■ DMC White	White	1252	0	0	0	0.0	0.0	0.0	0	0	1.000